

## Replacement and Renovation of the Sensor Spot

The probe sensor spot should be wiped clean from time to time. Sensor spot replacement should not be performed unless:

- the sensor spot is damaged or
- you cannot calibrate to the correct value after long use (some years).

Note that the combined LDO/temperature probe D30 uses a disc with a sensor spot.

First, make sure that you have a sensor spot kit, item number D30SPK. It includes a disc with a sensor spot glued to the center, and one O-ring.

To replace the membrane/sensor spot and renovate the probe, proceed as follows. The following procedure will completely renovate the probe.

### STEP 1



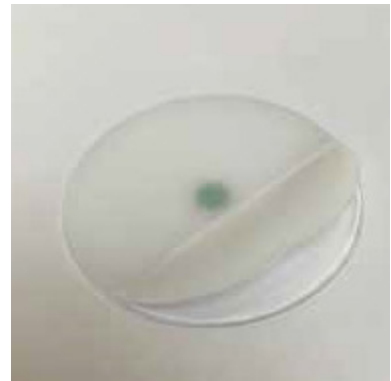
Remove the probe from the water, rinse it, dry it and unscrew the cap. If it is stuck, tap the side of the probe gently with a hammer, then try again.

### STEP 2



Place the O-ring in the recess on the top of the probe body.

### STEP 3



Remove the white foil from the disc.

### STEP 4



Place the disc on top of the probe body with the green spot against the body. Do not touch the spot on any side with your fingers.

### STEP 5



The disc is centered on top of the probe body. Put the probe cap over the disc.

### STEP 6



Screw the probe cap and body carefully together.

**TIGHTEN THE CAP HARD.**

**IMPORTANT:** After renovation, the probe can be regarded as new. It is now ready for calibration in air.